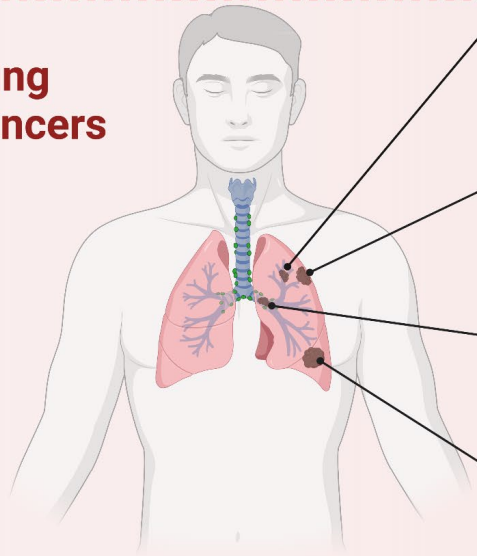
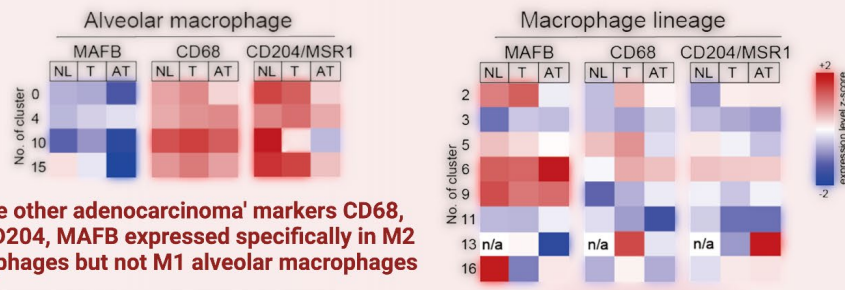
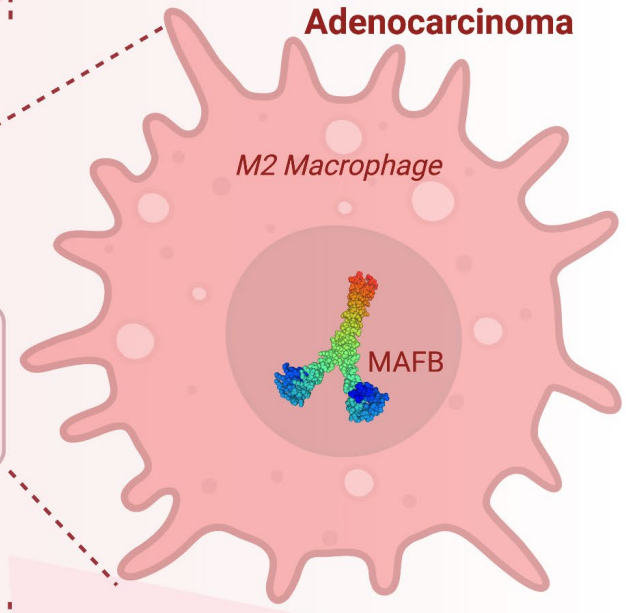


Lung cancers



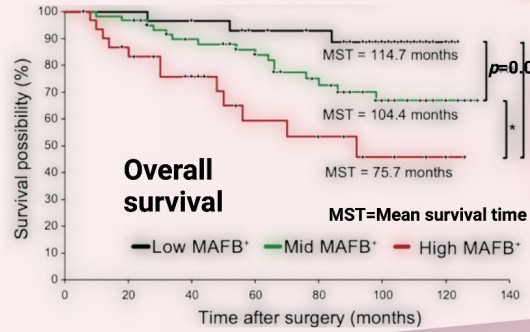
- Small cell carcinoma (~10-15%)**
Early, widespread metastasis; Most common in heavy smokers
- Adenocarcinoma (~40%)**
Common; Includes minimally invasive adenocarcinoma (MIA) and adenocarcinoma *in situ* (AIS)
- Squamous cell carcinoma (~25-30%)**
Most often arises in mucous membrane of proximal bronchi
- Large cell undifferentiated carcinoma (~10-15%)**
Rare; Large, rapidly-growing tumors often located in peripheral lung tissue

Small cell lung cancer (SCLC)
Non-small cell lung cancer (NSCLC)



Unlike other adenocarcinoma markers CD68, and CD204, MAFB expressed specifically in M2 macrophages but not M1 alveolar macrophages

1
Specific
By scRNA-seq, MAFB was specifically expressed in M2 Macrophages



2
Poor prognosis
Low survival rate

Adenocarcinoma Patients' groups according to Immuno-histochemical analysis:
Low MAFB expressed
Mid
High

