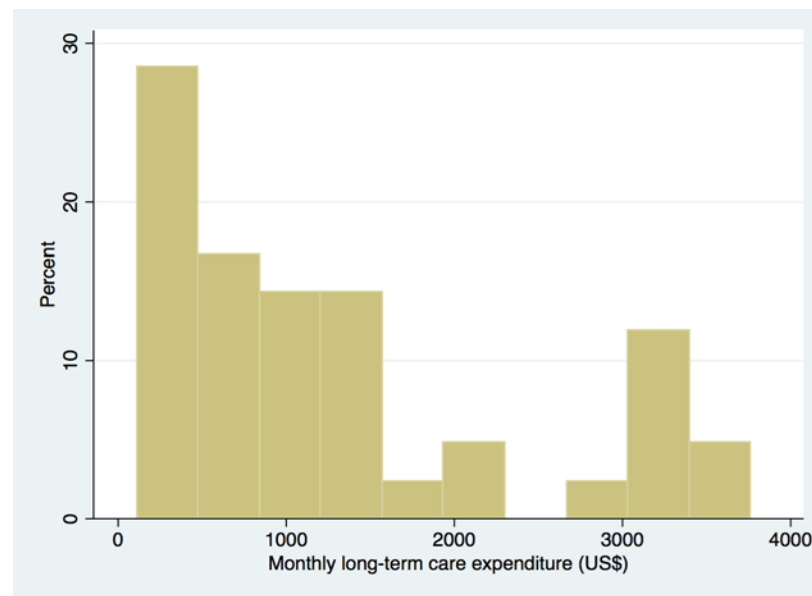
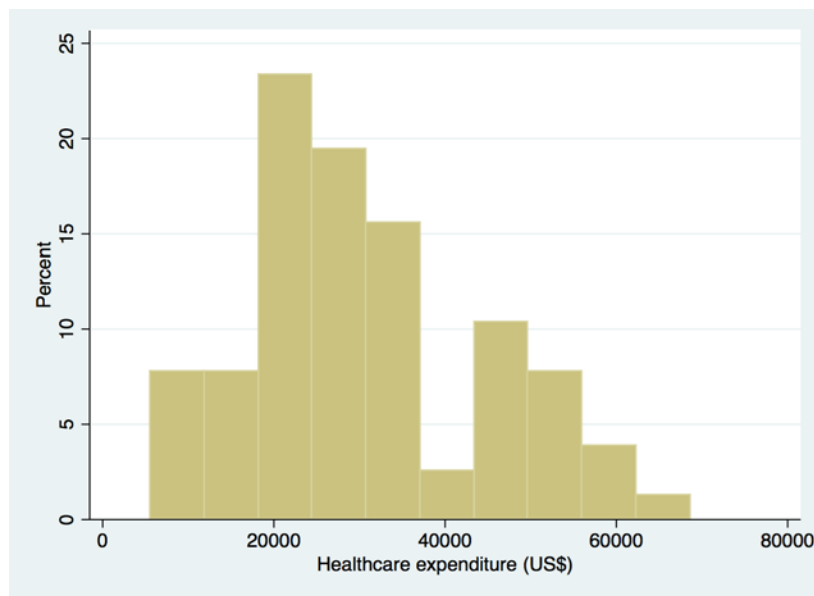


Estimated expenditures for hip fractures using merged healthcare insurance data for individuals aged ≥ 75 years and long-term care insurance claims data in Japan



Little was known about hip fracture expenditure in Japan.

Healthcare insurance claims data for adults aged ≥ 75 years were merged with long-term care insurance claims data, obtained from Kashiwa City.

We estimated the mean healthcare expenditure and monthly long-term care expenditures post-hip fracture to be ¥2,600,000 (US\$29,500) and ¥113,000 (US\$1290), respectively.

References: Mori et al., Archives of Osteoporosis (2018) 13: 37

Contact: Nanako Tamiya, MD PhD MSc, Professor at the University of Tsukuba