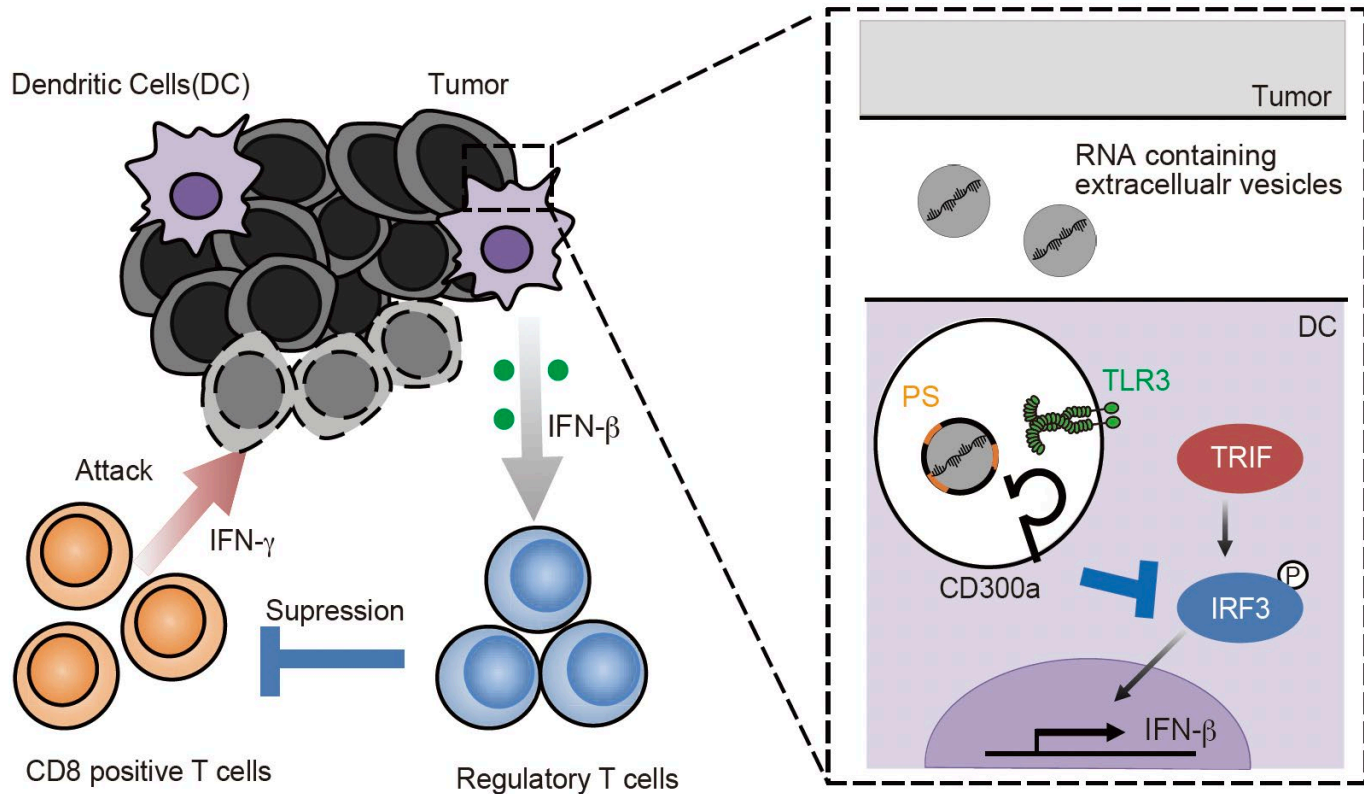


# Tumor derived extracellular vesicles regulate tumor-infiltrating regulatory T cells via the inhibitory receptor CD300a



Although tumor-infiltrating regulatory T (Treg) cells play a pivotal role in tumor microenvironment, how Treg cells activation are regulated in tumor microenvironments remains unclear. We found here that the tumor-derived extracellular vesicles (TEVs) and CD300a interaction on dendritic cells regulates Treg cell activation in the tumor microenvironment.

References: Nakazawa et al., eLife 2021; 10: e61999. DOI: <https://doi.org/10.7554/eLife.61999>

Contact: Prof. A Shibuya