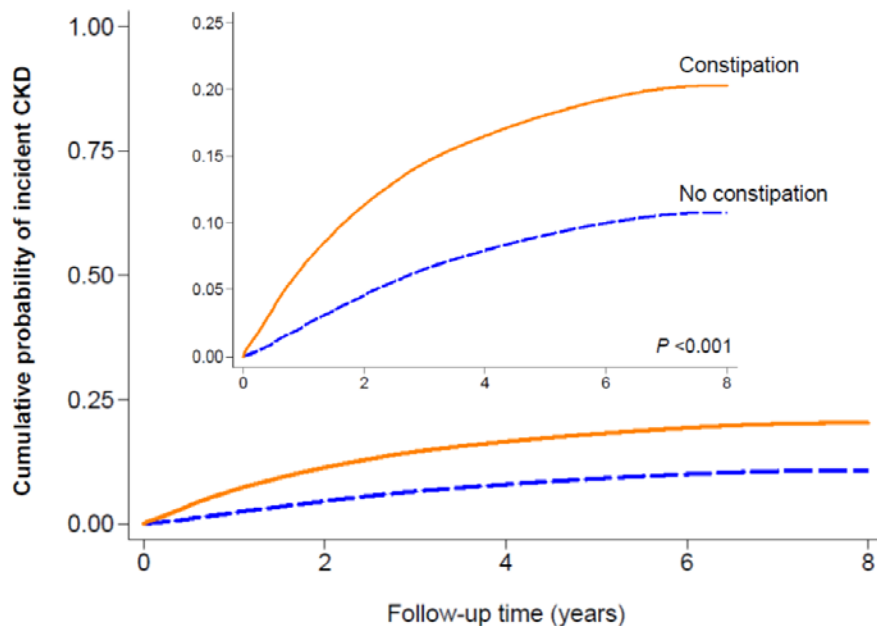
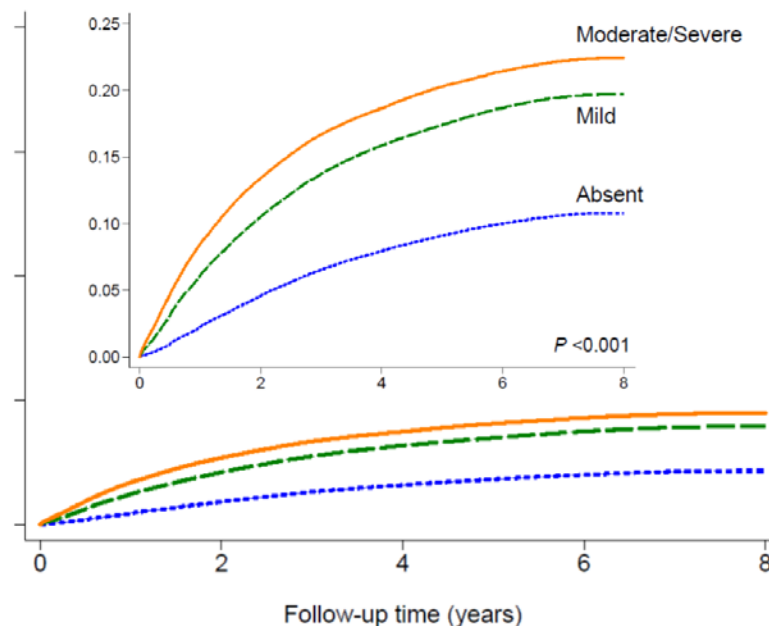


Constipation and Incident CKD

By constipation status



By constipation severity



The study showed that constipation status and severity were associated with higher risk of incident chronic kidney disease (CKD) and end-stage renal disease (ESRD) and with progressive kidney function decline, independent of known risk factors.

References: Sumida et al., *J Am Soc Nephrol*. 2017;28(4):1248-1258.

Contact at University of Tsukuba: Prof. K Yamagata