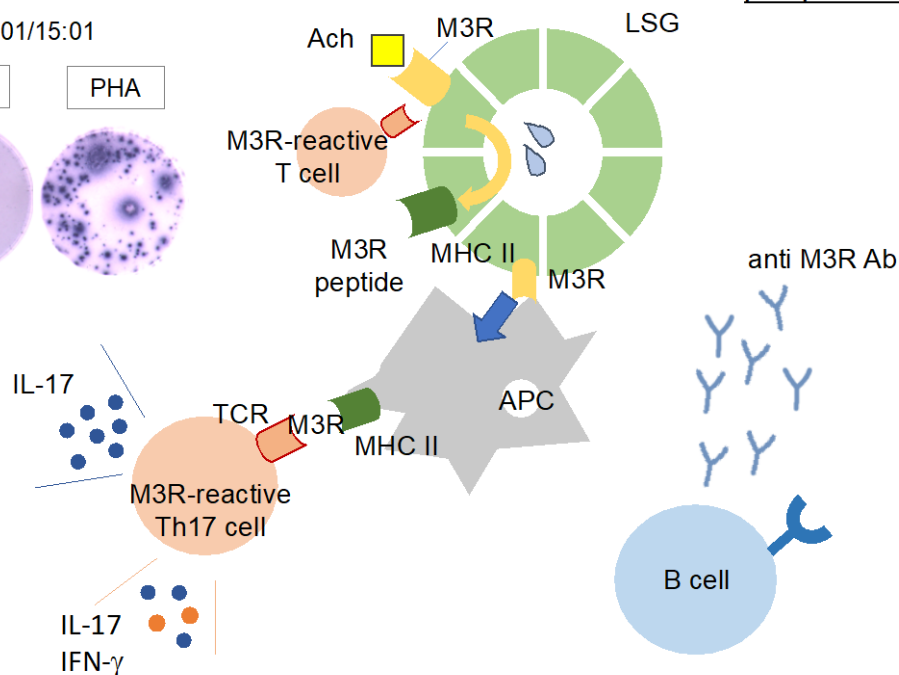
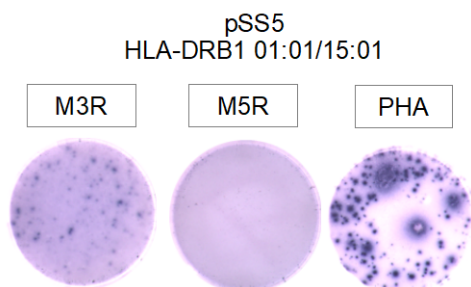
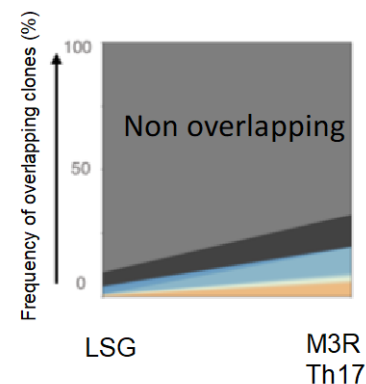


M3 muscarinic acetylcholine receptor-reactive Th17 cells in primary Sjögren's syndrome

ELISpot assay of M3R-reactive Th17 cells



T cell repertoire overlap of M3R-reactive peripheral Th17 cells and salivary gland



We identified M3R-reactive Th17 cells in peripheral blood of primary Sjögren's syndrome (pSS). M3R-reactive Th17 cells positivity correlated with higher titers of anti-M3R antibodies, whose systemic activity score tended to be higher. Overlapping peripheral M3R-reactive Th17 cells TCR repertoire were seen in about 10% of labial salivary gland infiltrating T cells. Our study highlight the role of autoantigen specific Th17 cells in pSS.

Reference: Abe S et al., *JCI insight*. 2020; 15:e135982

Contact: Dr. Isao Matsumoto